



NEWS RELEASE

January 2007

Alphora Research Inc. expands facilities with NMR and LCMS Capabilities

Alphora Research Inc. is pleased to announce significant investments in its analytical and development capability.

In its continuous efforts to better serve its clients, Alphora Research Inc. recently expanded its analytical capacity to include a 300 MHz NMR as well as a LCMS.

The Bruker AVANCE II™ 300 MHz high performance digital NMR spectrometer, complete with multinuclear probe for Hydrogen, Carbon, Fluorine, and Phosphorus will provide valuable day to day support in synthetic route selection and process development efforts.

The Bruker micrOTOF focus™ LC Mass Spectrometer will provide key information for the development of synthetic processes through the characterization of process impurities and in establishing an appropriate specification for clinical and commercial API processes.

These additions represent significant investment for Alphora and reinforce Alphora's capabilities in API Technology Development, ensuring its clients continue to receive "the right development at the right time".

Founded in 2003 by Dr. Jan Oudenes, Alphora has continued to grow and is now staffed by a total of 40 people. This includes a total of 29 scientists, of which 10 are Ph.D. chemists. Alphora's operations include synthetic laboratories, analytical laboratories, cGMP stability studies and cGMP kilo laboratories. The cGMP Kilo laboratory has delivered a number of clinical stage materials to clients and is preparing for the validation of one product in 2007.

For additional information on this news release or about Alphora, please contact:

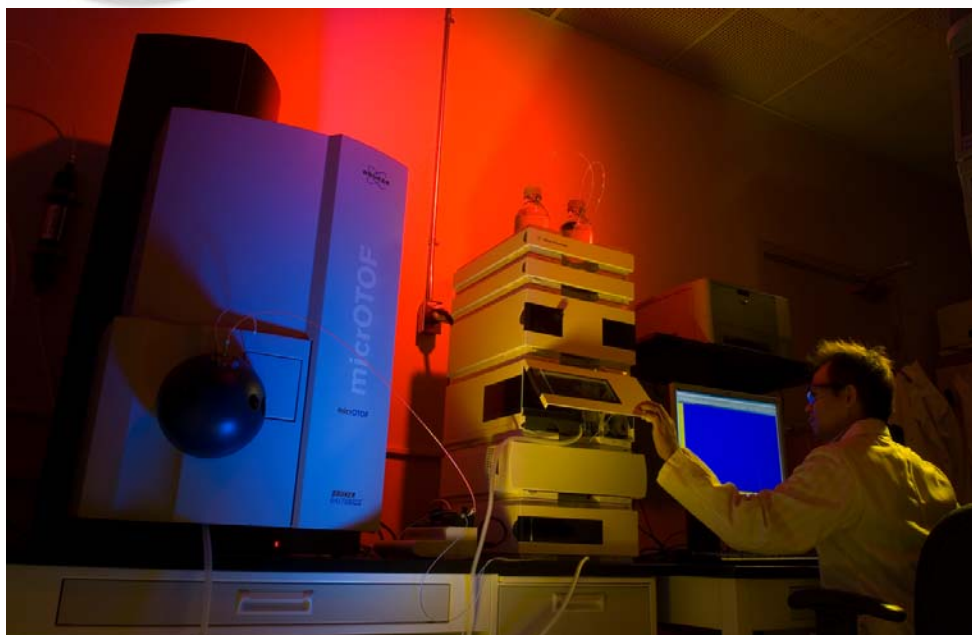
Geoff Evans,
Director of Business

OR

Lisa Gervais
Executive Assistant



NEWS RELEASE
January 2007



2395 Speakman Drive, Suite 2001
Mississauga, Ontario, Canada L5K 1B3

Tel: 905 403 0477
Fax: 905 403 8744


Alpha
www.alphoresearch.com